

Uniform Policy

All Windrose Academy pupils are expected to be neatly dressed for school starting September 4th. They will be expected to be wearing school uniform on a daily basis unless otherwise announced by the school. On non-uniform days or at after-school functions, clothing worn to school should be appropriate for a school environment.

Uniforms can be purchased starting **August 15** from **Windrose Academy** premises.

We wish your child all the success in this academic year and would like to thank you for choosing Windrose Academy.

If you have any comments or suggestions kindly email us on reception@windroseacademy.com

Uniform Guidelines

- All pupils must wear the official school uniform polo, red with the W.A. logo displayed.
- No jeans, or sport pants are permitted aside from the ones provided with the uniform set.
- Sweaters and cover-ups must be plain, white, black or dark grey in color and without writing or extra coloring. No other color will be accepted as part of the uniform and will be viewed as an infraction of the uniform policy. If pupils enter school with a sweater or cover-up that does not adhere to the uniform policy, they will be asked to remove it.
- Pupils are only allowed to wear their PE uniform to school on days when they are participating in Physical Education classes.

Uniform Code of Conduct

Pupils who are not dressed according to the Dress Code will not be permitted to attend class. They will be given an opportunity to:

- Go home with that day being marked as an absence from school;
- Be escorted from the class to the principal's office to wait for his/her guardians to provide the appropriate uniform.

Repeated violations of the Dress Code will result in a Parent Conference and possible suspension from the school.

All pupils are to wear the standard school uniform as follows:

Standard school uniform:

Boys

- Red Polo (long or short sleeve)
- Tailored Grey Trousers
- Tailored Grey Shorts
- Grey Pullover
- Grey Gilet (optional)
- Grey /White /Black socks
- Black /White shoes

Girls

- Red Shirt (long or short sleeve)
- Tailored Grey Trousers
- Tailored Grey Shorts/Juppe short
- Grey Pullover
- Grey Gilet (optional)
- Grey /White /Black socks
- Black /White shoes

Standard sports uniform:

Girls/Boys:

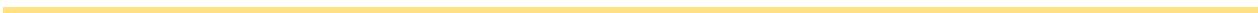
- White Sports Polo Shirt
- Grey PE Shorts
- Grey Sweatpants (optional)
- White PE socks
- Training shoes
- PE Sweatshirt/Jacket (optional)

***All socks, tights, and shoes should be free of any obvious brands patterns or designs.**

Polo Half Sleeve



Polo Long Sleeve



Pants



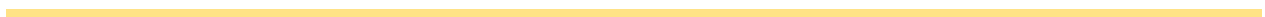
Shorts



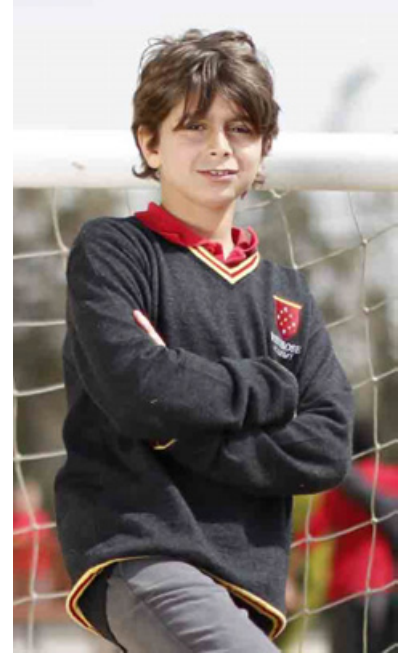
Jupe Short



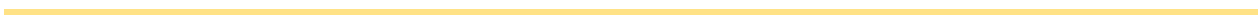
Jacket



Pullover



Gillet



P.E. T-shirt Half Sleeve



P.E. T-shirt Long Sleeve



P.E. Shorts



P.E. Pants

